

Haslegrave

Reviewed: November 2023

Purpose:

The purpose of a Generic Emergency Evacuation Plan (GEEP) is to enable visitors to the building with restricted mobility or those who may not be able to evacuate unaided to become familiar with the layout, evacuation procedures, available equipment, and communication devices.

If you feel that this document does not provide you with sufficient information or that you require further assistance, please contact the Loughborough University Fire Officer on 01509 222182.

The building:

Haslegrave building is comprised of 4 floors. All floors are accessible via the lifts and has two protected stairwells.

The block has two designated emergency final exit at ground floor level dispersing directly to outside.

Emergency egress using the lift is not possible during an evacuation. Each floor has at least one safe refuge area and provides an Emergency Voice Communication (EVC) System which links directly to security.

Action required on hearing the fire alarm:

If able, you should leave the building immediately by the nearest fire exit (see attached floor plan) and report to the assigned assembly point for the building.

If you are unable to evacuate the building unaided, please proceed to one of the safe refuges located on the floor (see attached floor plan).

An EVC system is available in each safe refuge. Use this to contact the security team and notify them of your location, details of which are printed on the front of the panel. Full details on how to use the emergency call point are also provided in the safe refuge.

Other recommendations:

It is recommended that all visitors to this building should familiarise themselves with the layout of the building and with the fire alarm signals.

Security's emergency contact number is 888 (internal lines) or 0800526966.

Equipment provided:

In addition to the general alarm, a safe refuge area is available on each floor. A disabled emergency call-point that links directly to security is located in each of the safe refuge areas.

Two accessible fire exits are available on the ground floor of the building (see attached plans), which is also the final exit from the main stair core.



Your Assembly Point Is:

Fire assembly point 18

LOUGHBOROUGH UNIVERSITY EMERGENCY INSTRUCTIONS

IN CASE OF FIRE



Sound the alarm. Operate the nearest fire alarm call point.



Telephone internal emergency number 888 or 0800 526 966 if using outside line or mobile phone. In the event of a delay call 999 for the Fire Service giving the correct location of the building.



Do not attack fire with extinguisher unless trained to do so.

ON HEARING THE ALARM



Evacuate building and go to assembly point. Your assembly point is

ASSEMBLY POINT 18



When alarm is given - do not panic, do not run. Leave the building following the fire emergency exit signs.



Do not re-enter the building unless told to do so by the Fire Marshal, Warden or Fire Service.



In the event of a first aid emergency, call 999 and immediately inform Security on the above numbers that an ambulance or paramedic is on its way to campus.



In case of other emergencies, contact LU Security on the above numbers. In the event of any delay in contacting Security, call 999 for the relevant emergency service.

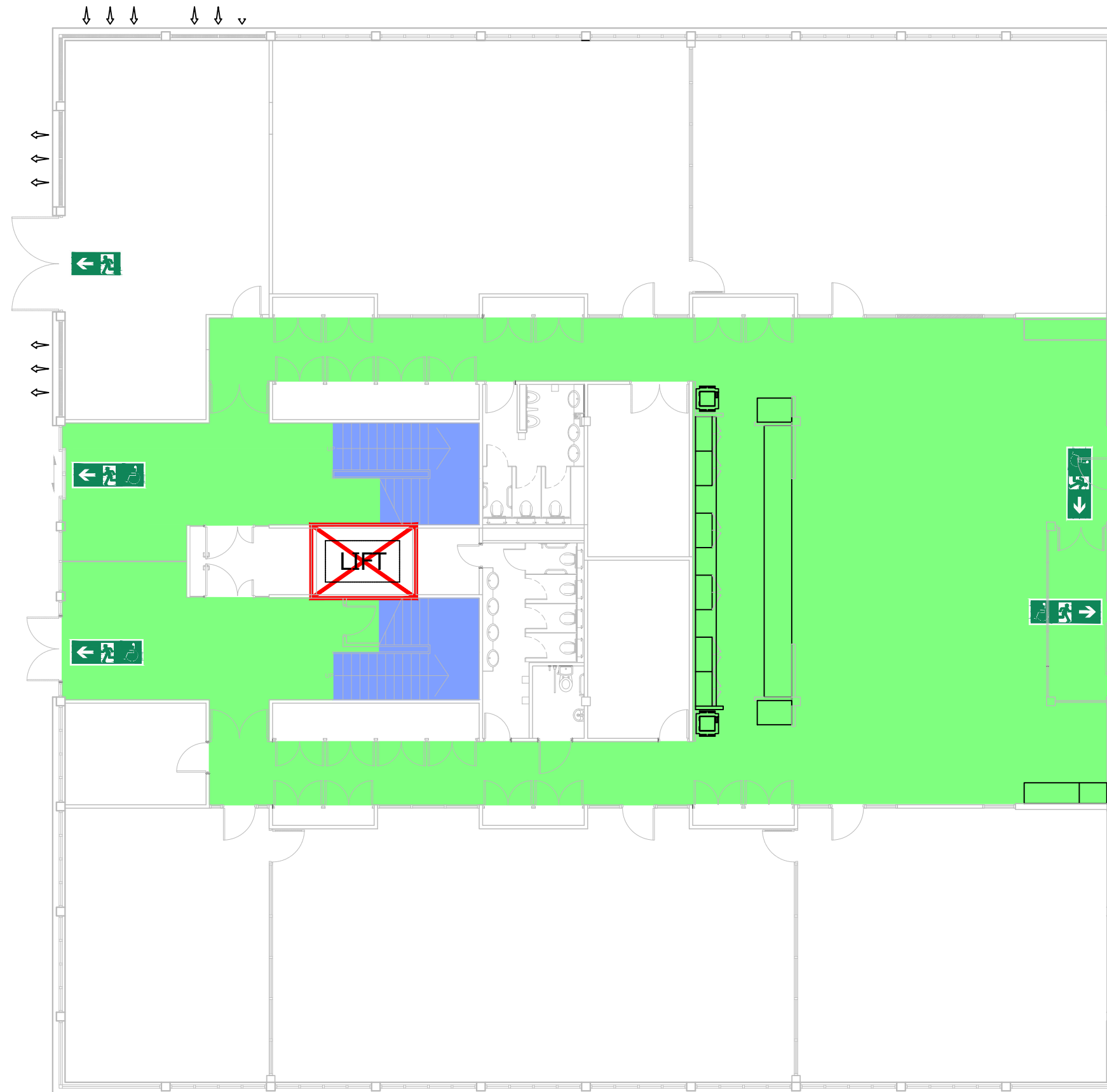
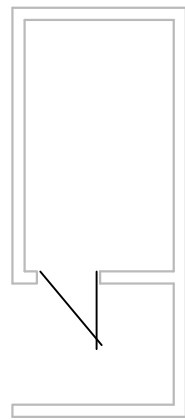
Assembly point 18 is allocated to this building which is shown in yellow



ASSEMBLY POINT 18 - Haslegrave Building



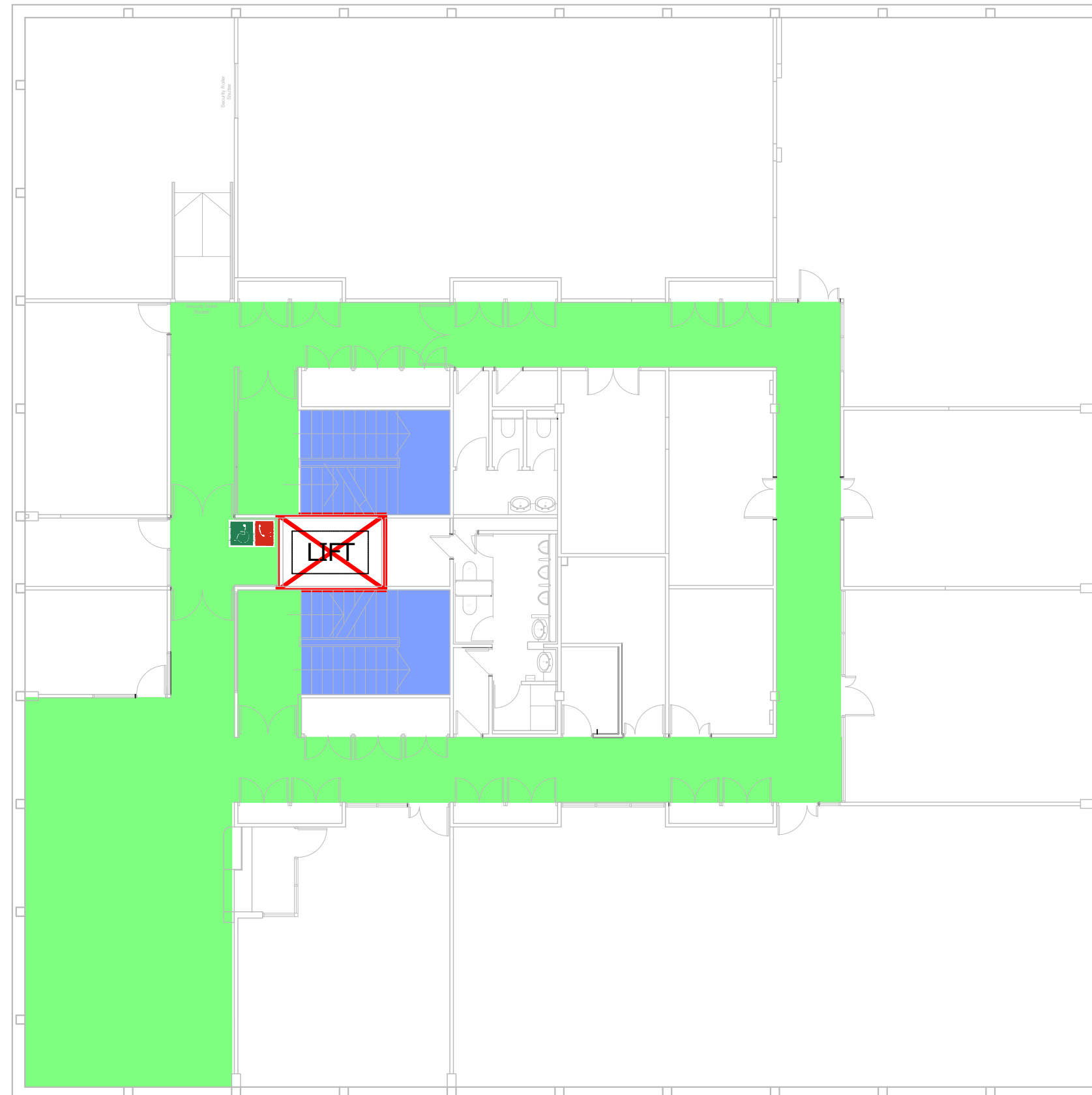
013-HAZLEGRAVE GROUND FLOOR LEVEL GENERIC EMERGENCY EVACUATION PLAN (GEEP)





013-HAZLEGRAVE FIRST FLOOR LEVEL

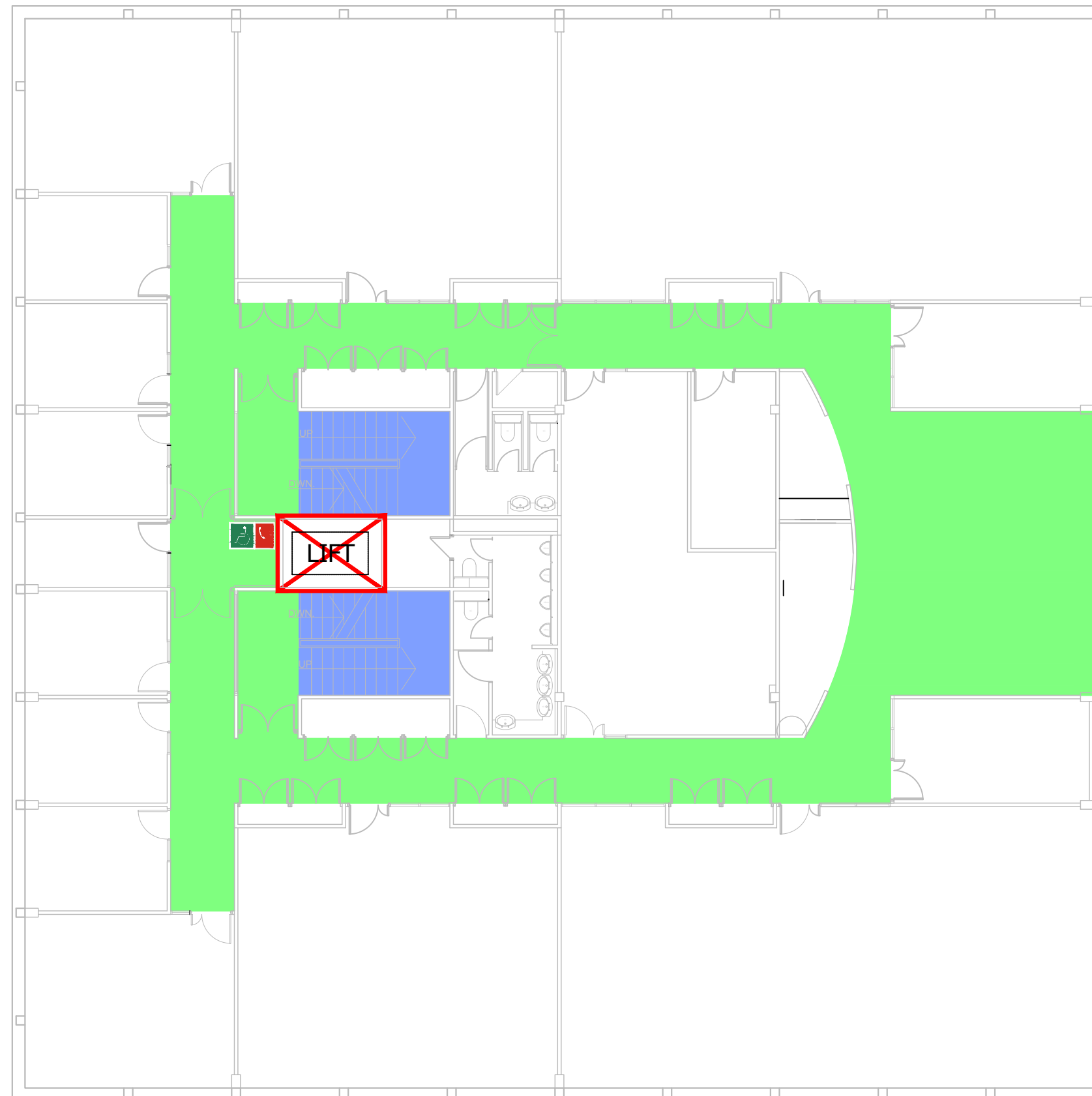
GENERIC EMERGENCY EVACUATION PLAN (GEEP)





013-HAZLEGRAVE
SECOND FLOOR LEVEL

GENERIC EMERGENCY EVACUATION PLAN (GEEP)





013-HAZLEGRAVE THIRD FLOOR LEVEL

GENERIC EMERGENCY EVACUATION PLAN (GEEP)

